



CRACKER BOX PALACE NEWSLETTER

A Not For Profit Organization Helping Farm Animals In Need

Vol 12 - Issue 1

March 2012



The All New 7th Annual Gala Ball! March 3, 2012

Captain Jack's Banquets On the Bay
Sodus Point

Our Gala Ball has historically been our biggest event and the event that pretty much carries us through the winter months. It is an elegant evening including wine tasting, fine cuisine, open bar, silent and live auctions featuring incredible donated items, music and dancing.

This year's Gala was moved from Newark to the Point due to a change at our past location for serving sit down dinners of this magnitude, also changing our usual date of the ball. But with all the changes, some great new options have come to fruition.

Area bed and breakfasts, lodges and cottages are available for overnight stays, we will have car service to deliver and take home ball attendees within Sodus Point. There's even limited bunkhouse stays available at the farm this year!

We are all very excited about the new Gala Ball! We hope folks will come and make a mini vacation out of it this year and visit the farm while they're here!

For information about donating items for the auctions, sponsoring a table, group discounts, reservations for overnight stays, tuxedo specials, or coming to the ball, please contact:

Shelene Lochner 315-576-6586

slochner@ymail.com

Or

Mary Novick 585-737-5685

novick60@gmail.com

ROCKED THE FARM WITH ALMOST \$2400!!!!

Cracker Box Palace had 49 donors log on and donate on December 8th's first ROC the Day powered by United Way of Greater Rochester bringing in our official total at \$1,894.80 along with one \$500 Rock Star donor that was picked to choose the charity of their choice to donate the money!

Thank you to United Way and all that donated and to Barb Deroo for getting us all signed up for that program! What a great day!

United Way also announced that they will be having another ROC the Day 12-12-12! We'll be looking forward to that again!



ANNOUNCEMENT!

The First
Trail Riding Club Meeting

Date will be Saturday,

April 21

10am at

The Bunk House

on the farm.

Please RSVP to let us
know you're coming!

crackerbpalace@netzero.net

Outstanding in our Fields!

This page is dedicated to introduce the amazing volunteers and businesses that help support the animals and keep the farm running on a daily basis!

Xerox has provided Cracker Box Palace with two grants in the past for building projects on the farm. But it was announced in January that Mary Novick, a part of the Lean Six Sigma organization at Xerox that works on process improvement, was granted a 6 month leave of absence to work full time with Cracker Box Palace. The Xerox Social Service Leave program that Xerox began in 1971 enables Xerox employees to take a paid leave of absence from Xerox so they can work on social action projects of their own design and choosing in their communities. To date, nearly 500 Xerox employees have been granted a social service leave ranging from 3 to 12 months.



Thank you so much Xerox for granting Cracker Box Palace such an opportunity to learn and achieve!



Mary Novick met Cracker Box Palace almost two years to the day at our Gala Ball. Shortly after meeting her there, we got a call from her regarding a donkey that was living in a horse trailer and needed help. So off we went to pick up our dear Merribelle. Mary has been with us ever since! She and her husband Art, would come religiously every weekend to visit with and bring treats to our donkey then, donkeys now! She would help with chores, helped with events, followed by joining our board of directors and writing grants for the farm! She helped us with our first community involvement grant to Xerox to build Merribelle's "Maternity Pen" and then a new Rabbit Run off the Ice House building at the Cow Barn. Her volunteerism at Cracker Box has now earned her a six month stint working to help us expand our existing fundraising activities, increase the awareness of CBP and the programs and services. Thank you again Mary for everything and we hope you enjoy your time with us! We hope to make you proud!

With the Gala Ball just around the corner, we must honor our amazing Shelene Lochner, who not only organized our first Gala Ball 7 years ago without ever having even attending a ball before! She has done an amazing job of organizing, decorating, inviting, advertising and promoting our Gala Ball to its seventh year!

Shelene has been involved with the farm when the farm was just 'an idea' we shared at a company picnic! She, on top of putting on the Gala Ball, also has served on our past board of directors as secretary, mucked stalls and acted as our publicity speaker for television interviews. She has been a great friend and supporter to Burt and Cheri and we are so grateful for all she does for us, physically and spiritually! Thank you Shelene!



The "Outstanding in Our Fields" Page will be a feature in each quarterly newsletter! We will be highlighting the efforts and good work done by our volunteers and supporters in every addition. I wish we could put them all in at once, but that would be a novel with all the people that help us here at the farm! So we will try to introduce them to you, our members, one newsletter at a time! We can never say or thank our volunteers and supporters enough for all the hard work they do to keep the farm running on a daily basis and keep the critters happy and healthy!

Trachtenberg Veterinary Associates

David Trachtenberg, DVM
Thais McCoy, DVM
Amy Ortez, DVM

STE 3B 481 Penbrooke Drive
Penfield, New York, 14526

Current phone: 315-524-4879
New phone number coming soon!

Over the past 20 years, Dr. David Trachtenberg has serviced the equine community and now, he announced the opening of their new equine veterinary practice: Trachtenberg Veterinary Associates. TVA is designed with the sole purpose of being able to deliver superior service. As a matter of fact, it is the cornerstone of their philosophy.

At TVA, emphasis is on wellness exams, appropriate vaccination and dentistry. After all, the best treatment is prevention!

However, if your horse becomes ill or develops a performance issue, TVA has some of the most advanced diagnostic and therapeutic options available today, including digital radiology, endoscopy and digital ultrasound.

In addition to the medical services, a range of field surgeries and reproductive management are available.

TVA is a full service equine ambulatory practice, meaning that whether you have a simple or complex problem, the vets will come to your farm, saving you shipping expenses and time.

TVA has completely designed their scheduling to ensure timely appointments, consistent follow up care and prompt emergency service.

LART TEAM NEWS.....

The Lart Team picked up their new trailer to be used as the new Emergency Rescue Trailer this past January thanks to a generous grant awarded by ASPCA. They will now be building shelves and storage compartment to carry all the Rescue Team's equipment in one convenient trailer, saving them precious time when emergency calls come in involving large animals!



Sponsorships are available for signage on the trailer that will help continue training and purchasing necessary equipment for the team.

The team was recently called to assist a vet with a downed horse in Webster. All's well that ended well and the horse up and doing fine!

The dates are set too for the LART team's Large Animal Emergency Response Team training May 19 – 20th 2012, 9am till 5pm. Days End Horse Rescue of Maryland will be returning to the farm and doing a full review of all the basics every horse owner, veterinarian, emergency personal and of course, anyone wishing to join our LART team should know!

Email crackerbpalace@netzero.net if you're interested in participating in this hands-on training, joining our team or if you wish to observe the weekend's training.



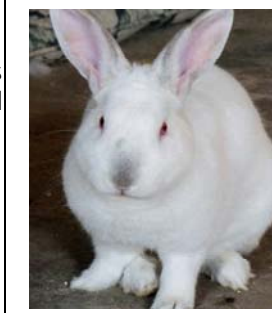
Kritter Kris and Feathered Friends Reminds us all.....

Here comes spring! Every spring wildlife babies are everywhere. Some will be born starting in March, so watch out for them. The moms will be out during the day looking for food. You've got to get things done while the children are sleeping. So assume the worse if you see a fox or coyote or raccoon out during the day. Please leave babies alone, unless you know they are orphans. Use gloves, or something to handle them. Then call a rehabilitator, then! Not a couple days later, feeding, handling any wildlife isn't the best idea. You don't know why mom is gone, taken by a predator, hit by a car, or was she sick and died. Please keep this mind, before taking these animals/birds into your home. Call for me for help, or another rehabber. Krittrkris (315) 374-4542

New Admissions!

This winter has been a tough one with all the calls we've gotten to admit animals due to the very tough economy, but we are just plain 'full up' with critters and adoptions have slowed down. We have done our best to try and redirect people with other ideas for placing their animals, and have even squeezed a few more in and made room for the ones that are truly in need. CBP is a no-kill shelter and will NOT euthanize any animal to make room for another. Thank you for your understanding and patience with us.

"Santa" was admitted just before Christmas. He is a crazy, sweet BOY! He was admitted as Princess Santa, but we found out she was a he! He will be available for adoption soon after his visit to the vets.



"Rhubarb" pictured left with Jody, is a very large, very sweet standard rex rabbit. She's a gentle giant and sure to make someone a great new family addition!

"Walnut" and "Paris" are 2 very sweet New Holland Lops that arrived at the farm.



"Oscar" pictured right, is an Americana Rooster. He's a very handsome guy and looking for a home! He does not do well with other birds, but is GREAT with people and would make someone a wonderful horse barn rooster!

*We are running out of room for roosters on the farm! Let us know if you need a crow in the morning!



Adoptions and Foster Care

The Hanagan family of Sodus is now enjoying the company of their new house rabbit "Dia"!

"Philo" the rabbit found a new home with Trish Vanable and company!

"Gala" a beautiful black and white kitten now enjoys a warm bed with Jamie and Jo from Emerald Point!

Thank Ewe all for sharing your homes!

How many animals are at the farm now?

30 rabbits	18 cats
36 goats	3 tom turkeys
5 sheep	18 chickens
9 pigs and hogs	19 ducks
43 horses	
2 donkeys	1 guinea hen
1 llama	1 peacock
1 alpaca	8 geese
1 cow	

Total: 196 this month!

*These numbers change almost daily and we have calls for animals needing homes regularly!

On a Personal Note...

Get well soon Dorothy VanEnwyck!

We miss your visits and we hope you're feeling much better very soon!

The Animals from the Cow Barn!



How can I adopt or foster care an animal from Cracker Box Palace?

This is a question we hear time and time again! We always love it when an animal from the shelter gets a new, loving, permanent home or even gets a trial 3 month run with our foster care program. Foster care is a great way to get to know your new adoptee or try the new situation out with your family. And in foster caring for an animal, costs and services provided for the animal are sometimes considered for a tax deductions. It helps the new owner out and also gives us here at the shelter a break to keep spots open for new animals to come in.

I wish I could say it was easy to just come in and get an animal, but we do have an adoption/foster care procedure that we follow.

Our goal is always to try and match up the right people with the knowledge and experience to enjoy their new ward once they take them home. First you will be asked to fill out an adoption application. We do follow up on our references and back ground checks, usually followed by a home visit to see where the animal would be kept. Then appointments need to be made to come to the farm and work with the animal you're hoping to adopt. We do like to see people come and work with their choice of animal a couple weeks before they leave the farm. It is important for us to know everyone, animal and human, are going to get along and enjoy their new family together. Obviously, in some cases due to distance, that's not possible, so other arrangements can be made. Cracker Box Palace then holds 'title' to the animal for the first year to be sure there's no problems. After a successful year, titles are considered to be with the new family. For more information regarding adoption or foster care, email

crackerbpalace@netzero.net.

Spring

Youth Programs Schedules for 2012

Summer

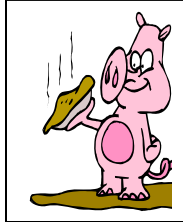


March (all month) BOOK COLLECTION

Help us fill the Bunk House library. Please drop your new or gently used books about animals, farms, camping, farm history. A tote will be on the bunk house porch for the book collection.

March 31, 2012

“Easter Egg Hunt & Muddy Trail Hike”



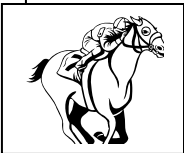
Saturday at 9:30-2:00 pm Lunch Included
Cost \$10.00

Hike deep into the woods at Cracker Box Palace and discover the secret ravines and hidden ponds.

This is a three hour hike and boots or very old sneakers are required. Mud may be 6-7 “ high, so be prepared to get wet! You may want to bring extra clothes to change into when we are done.

We will cook lunch on the fire at the camping circle when we return.

Meet at the Bunk House!



May 5 – 10am till 3pm

Cracker Box Palace Open House

3pm – 5pm Derby Party

4pm Hat auction

May 26 & 27

Survival Shelter Building and Camp out

Saturday noon till Sunday 1pm

Cost \$25.00

During this fun afternoon and overnight camping experience we will build a big lean-to, build a fire circle, cook dinner, go on a late night hike with flashlights, sleep in the lean-to in our sleeping bags, then cook breakfast and help with morning chores. Parents and other siblings are invited to come along and use tents in the big camping circle.

FARM CAMP

July 16th – 20th

and/or July 23 – 27th

Ages 5-12 Cost is \$100.00



Daily Farm Camp continues

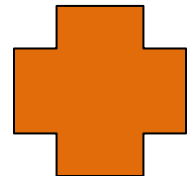
this summer. It will run from 9:00 am until 2:00 pm Monday – Friday this year.

It will be based in the Bunk House. Campers will receive a CBP Farm Camp T-Shirt with registration. The daily activities will include assisting with chores and grooming, a community service project, gardening, hikes to 2nd Creek, and staying over Friday night is an option this year for only \$15.00 extra (includes camp fire dinner and breakfast the following day).

The day is extended an extra hour this year so campers may spend more time giving the animals at CBP tender loving care in the form of grooming, reading to them, taking pictures of their favorite animals, or helping in the community garden.

Register on line and email your forms to Maryanne @ maryannewhyte@yahoo.com

If you have questions about camp please call Maryanne @ 315-573-0036



August 6 – 10th , 2012

“INTENSIVE ANIMAL CARE CAMP

This week will be filled with intensive care and treatment of different animal injuries and illnesses.

The older campers will receive instruction from experienced barn managers and veterinarian technicians. Animal anatomy and body systems, participant and animal safety, and proper handling of farm animals will be taught.

The day will run from 9:00 – 2:00 pm and be based in the Bunk House.



Register on line and email your forms to Maryanne @ maryannewhyte@yahoo.com
If you have questions about this new camp please call Maryanne @ 315-573-0036

Remodeling the Farm!

Since Cracker Box Palace has become the new owner of Alasa Farms, many repairs, updates, changes and remodels are in process and we're working to raise the funds and move forward with our plans. We are still waiting on our State grant to finish the sale of the farm and payoff our mortgage so we'll have that cash available again to add to our budget. In the meantime, we thank all that have supported us and helped us continue to work on the farm repairs and improvements. Your generosity and support is so very inspiring to us!

One of our biggest disappointments in 2011 was having to layoff our little staff of two full time and 2 part time employees to cover the mortgage payments. We are happy to report that Jody and Elaine are back on the payroll and we are not only hoping to hire two more part time people for the barns by the end of February, but also hope to add a part time office person by March! Our promise to create jobs is finally coming true! We will be working on developing an endowment fund also to help cover the hefty costs of upkeep for the farm and keeping a paid staff on at all times. Once the farm is up and running in full capacity, we hope to create thirty jobs for our county!

Some of the projects we're working on now include the Bunk House. This building is located to the right of the main driveway as you pull into the farm. Originally, it was the old Shaker Church that stood 3 stories tall before a fire destroyed it and the original Horse Barn back in 1925. Alvah Strong rebuilt it as the farmhand's house complete with a cook's apartment. We have been working on opening it back up to be an eight bedroom bunk house now with a large dining room, kitchen, TV room, 2 bathrooms (including one handicapped accessible bathroom), and library area that features books, both new and historic and on many topics! This will be used for overnight stays for volunteers that would like to stay to work, seminar and educational guests, youth programs and events planned by the farm. The Bunk house will be available for reservations once we complete the work on it and offered to members for a discounted fee.

Another project is growing our own hay here on the farm. This year we hope to plant the north end of the farm back to hay. This will provide us with roughly 50 acres of hay fields on the farm and about another 60 acres of donated fields we currently harvest hay from. We are working on finding grants and funding to purchase our own hay equipment and a large pole barn to store the equipment, hay and shavings in during inclement weather.

Our orchards will continue to be run and cared for by Cherry Lawn Farms, the Ferber Family of Sodus. They have been wonderful partners to work with and we thank them so very much for helping us with the orchards and U-Pick Apple!

Our forest project has been a lengthy and includes the help of Genesee Land Trust. This spring should open up our newly worked on and marked trails for horse back riding and hiking. There is much work yet to be done on the trails to finish by June. We are hoping to find donated services and materials to finish the south east forest, or the "100 acre woods" as its been lovingly nicknamed. We will be reaching out to businesses and services to repair and reseed trails and to finish trail construction including bull dozing and culverts in a variety of sizes and lengths. We will need volunteers to finish clearing and marking, building hitching posts and setting up small camping areas for people to stop and rest themselves or their horses and enjoy the beautiful view of the woods. We were donated a beautiful split rail fence that will mark the trail along the north east field and keep people on the property that has to be installed. There is also a work date set by Genesee Land Trust and our friends at Trail Works for the trail by Second Creek of May 26th. We also hope to recruit the help of a youth organization to designate and set up a 'Fairy House Trail' in a part of the woods so young people can go out and explore the possibilities of building or experiencing fairy houses!

Forestry products are also being explored as well as a Forest Manager position on the farm that will be included in our final decision once we start working on logs, pallet and fire wood, and developing a sugar bush for an additional revenue for the farm.

Sue Epstein has agreed to help us organize a Trail Riding Club also for the farm! With the trails we hope to invite horse back riding enjoyment and events to our agenda. This plan is kind of a back sided slant for the staff and volunteers of the farm also so we can put down our muck rakes and hammers and get out and enjoy the horses of the farm again! Thank you Sue for getting us back in the saddle again and getting some hours on our adoptable horses!

We will be remodeling the old CBP office at the Creamery and Ice House to be our new small animal medical building and Bunny Run due to a very generous donation by the Browne and Dilella family! It will feature a small kitchen area and we hope to restore the old cooler to store our fresh produce! New cages and pens will be built in the Ice House end with heat for animals in distress that we receive during the winter months. This end will also have the new Bun Run sharing Stormy's pasture, generously provided by a community grant from Xerox! We will be dedicating to a very special friend and past member of the farm, Beryl Dilella. The dedication of the building is scheduled tentatively in May.

New Events, Programs and Features For 2012!!!

Not only Gala Ball will experience changes this year, but Music Fest and Animal Faire are also being offered to sponsors this year and we hope to boost attendance to both as a result. Music Fest already has bands returning from last year including Wells Hollow!

Also new this year is our new spring event, Derby Day and Open House – May 5th, 2012! Open House will be held 10am till 3pm. Walk the farm, the trails, meet the animals, bring the kids to participate in some of our Youth Program fun, take a hay ride, talk to the volunteers and staff of CBP. There will also be a silent auction for our Derby Hats! Derby Hats are hats that are being donated by organizations, individuals, and businesses that are decorated for the Derby! If your group would like to donate a hat to our auction, please let us know! We will be asking area businesses to allow their employees to wear our hats before the auction to ‘display’ them at their best vantage point as our advertisement! Again, please let us know if you or your business would like to participate in our hat auction. At 3pm the Derby Party starts at the Bunk House with big screen TV coverage of the Kentucky Derby, “Horse – De – Overs”, a variety of mint drinks including Mint Julips and wagering will be encouraged with all proceeds of the betting going to benefit Cracker Box Palace!

There are also walks and hikes hosted by Genesee Land Trust regularly on the farm. Please see their web site for dates and times of the hikes.

Youth Programs has a list of wonderful opportunities for the kids and Farm Camp will return this summer with even more farm fun! Please see the article in this newsletter regarding their times and events.

Days End Horse Rescue of Maryland will be returning to the farm May 19th – 20th for another Large Animal Emergency Response Training. We encourage all horse owners, emergency personnel, veterinary professionals, area CARTS and LARTs to attend, along with anyone interested in joining our LART team! Please see the LART News article in this newsletter for more details.

Trail Riding Events will return to the farm! Dust off your saddle and come play some of our crazy trail games while riding our new trails on the farm! Interested in working with one of our horses to ride the trails... let us know! We will be looking for experienced, dedicated horse people to help us work with our horses to get them back in shape to ride. Work to lease programs available.



I'm not sure... but I think we have to go back to work? How exciting! Back on the trails with us!!!

Roll Up Your Sleeves, Plan On Getting Dirty and VOLUNTEER!!

April –

- *Disc and plant fields to the north for hay!
- *Finish Trails!!!!
- *Get Community Garden ready to plant
- *Sheep Barn and Pasture in
- *Yard Work Starts!
- *Form a Garden Club to take care of flowers, herbs, grapes, berries and rhubarb
- 7th – Board Meeting - 10am office
- 14th – Orientation 9am till noon Kris
- 7th – 14th – SCHOOL BREAK
- 19th – LART Meeting – Bunk House 7pm
- 21st – First Trail Riding Club Meeting 10am in the Bunk House
- 21st - Work on getting Museum open – 1pm till 3pm
- 28th – Farm Clean Up and Volunteer Appreciation Picnic

May – Hay starts! Williamson Apple Blossom Parade

- *Newsletter information due for June Newsletter!
- *Shots and physicals due for all animals on the farm!!!!
- *Community Garden in!
- *Memorial Garden clean up, plant new trees, work on fence or wall to separate from compost, St. Francis statue out.
- *Garden and Herb Club to start work on the yards.
- 5th – Derby Party Fundraiser and Open House
- 11th – Presentation at St. John Fisher's College
- 12th – Board Meeting (delayed a week due to Derby Party)
- 12th – Orientation 9am till noon – Kris
- 17th – LART meeting at the Bunk House 7pm
- 19th & 20th – LART training weekend.....
- 26th – Trail Work Party with Genesee Land Trust
- 26 & 27 – Emergency Survival Shelter Building and Camp out – Maryanne Whyte

June –

- 2nd – Board Meeting 10am office
- 9th – Orientation 9am till noon – Kris
- 9th – Trail Ride Opener Coordinator: Cheri Roloson
- 13th – Planning Meeting 6pm – Music Fest, Medical for animals, Youth Programs, Forestry and Trails, Gift Shop and Web Store, Apples and produce, Vet Clinic, Historic, Hay Production, Bunk House, Trail Rides, Fundraisers, Harvest Party, Animal Faire, Community Gardens, Parades and Community Events, Advertising and Publicity
- 21st – LART meeting 7pm Bunk House



From Over The Fence With Barry the Goat

Hay all!

Barry here reporting from the Goat Pasture! What a weird winter this has been! We don't know to grow out our coats or shed lately!!!

Big plans are happening on the farm this year! The volunteers and staff have been fixing up barns, planning new pastures and gearing up for some big changes on the farm!

One change is the sheep and Red (the llama) will be moving into the Pony Shed next door! We goats number 36 and growing strong! The Play House will be ours again! Red was really disappointed when they moved the ducks in that barn for the winter. He thought he was moving right then! But the horses told me that the people will be rearranging the fence lines next spring too and the sheep and that llama will have a barn and pasture of their very own!



Before you know it, we will be living in spring! I can't wait! The kids will be back and kids bring treats! Here's hoping everyone has a warm and safe winter till then!

Barry

Volunteers & Supporters are how we Get R Done! Let us know if you can help!

Thank EWE! Thank Ewe!

Thank EWE to all the foresters and forestry people that have helped us explore the possibilities for improving our woods!

Thanks to all the kids from Project S.H.O.W. for coming out and helping with chores! Looking forward to working with you more in the future!

Here's a long overdue thank you to Gail Weiss and Phillip Wegman for the beautiful donation of split rail fence for our trails! It will be a wonderful addition!



Thank you Girl Scout Troop #40484 from Williamson for the wonderful Holiday decorations all over the farm! They were beautiful!

Thank you Webster Girl Scouts for the wonderful donations of towels and handy items!

Thank Ewe Sodus Central School kids and Heather Lamb for the wonderful holiday box of very useful items!

Thank you Wayne ARC and Wayne-Finger Lakes BOCES for the regular help with the rabbits!

Thank you to all that donated and contributed on ROC the Day!

Thank you Charlie Steitler and Jim Couperus for the great hay!!!!

Thank you Mark Lafrati and family for the help and LUNCH!!!!

And we can't thank Kelly and Gus Friedel and Marv Fanin for all the help and donations to decorate, supply, build, heat, plumb and electrify the Bunk House! And now they continue on their building journey to the new medical building at the Cow Barn! THANK EWE!!!!

Joyce Terwilliger for the holiday feed surprise when we went to pick up feed! Food for everyone!!!!!! THANK EWE!!!!

Thank you Bob and Margaret Hyman for all the help, support and list of donated items too long to list in the newsletter!

Thank you Barbara Nielson for the donation of medical supplies and feed!

Thank you to all that are and have sent in donations and items for the Gala Ball. We hope to see everyone from The past balls and new faces at our new Location this year!

THANK EWE!!!



Memorials

In memory of Seth. Our sincerest sympathies go out to Sarah Groulx and family. A donation was made to thank the LART team for their efforts with him.



Seth

Lauren Frank sent a memorial to Nancy Sturm for Hartely Grant Miller May Sturm, (dog) who passed on November 17th at the grand old age of 16.

Gordon DeLorm wishes to remember Zar, Gus and Wesley- horses that have gone to Rainbow Bridge.

Our sympathies and prayers go out to Mary Rouse on the loss of Princess.

Cracker Box Palace wishes to share our loss of Miss Feathers, the hen. Spunk and Dolomite the rabbits.

In memory of Richard Bodane – Patti Phalen and Debbie Hollowary

*May the road rise to meet you.
May the wind be always at your back.
May the sun shine warm upon your face.
May the rains fall soft upon your fields
and until we meet again,
May the Lord hold you in the palm of His
hand.*

-Irish funeral prayer

Join Our Members List!

All memberships include a subscription to our quarterly newsletter. Sign up now and get the latest news from the farm! Be sure to pass this on to your friends!

Name _____

Street _____

City, State _____

Zip _____ Phone _____

Email _____

\$25 \$50 \$100 \$200 \$500 \$1000 Other _____

Please mail this information and make all checks payable to:

Cracker Box Palace
PO Box 174
Alton, NY 14413

Or you can sign up on our web site at
www.crackerboxpalace.org

Thank EWE for helping us care for the Critters!
Your donations are tax deductible!



Sponsor an Animal and Become A "Pen Pal"!!!

Just another fun way to help the critters of Cracker Box!
Sponsor an animal or give as a gift for the person who has everything or that just loves animals!

Poultry and Fowl	\$40
Rabbits	\$50
Goats and Sheep	\$75
Pigs and Hogs	\$100
Cow, Steer, Alpaca or Llama	\$200
Horse and Equine	\$250

Every "Pen Pal" comes with a photo of your sponsor-ee, and an honorary membership for the year! And many of our sponsors visit their critters regularly!

You can sign up for sponsorship on our web site at
www.crackerboxpalace.org or mail us a note at the address to the left in memberships!

Royale Sponsors

These are the sponsors that make us say "Wow"!

Would your business or corporation consider sponsoring an event, a vehicle, building or barn? We have over 500 members across the USA and our events will be advertised from Rochester to Syracuse and out to the Finger Lakes Region.

Some events and projects we're hoping for sponsorship are....

*Large Animal Response Trailer - \$600 for a two year sponsorship – name recognition on three sides of trailer, newsletter, web site and event recognition.

*Gala Ball 2012 - \$1000 Table Sponsorship with name recognition on the table, in the event brochure, advertising, web and newsletter recognition.

*Stall, Barn and Building Sponsorship – Call for details.

*Events and Programs to be sponsored such as Farm Camp and Youth Programs, Music Fest, Animal Faire, Trail Rides, Large Animal Response Training Weekend and much more.

Please call for details 315-483-2493 or email crackerbpalace@netzero.net.

Our Wonderful Newsletter Sponsors!

Let us know if you would like to be a featured sponsor in our quarterly newsletter or if you would like to sponsor an event, an animal, stall, barn, building or trailer. All proceeds go to help us run the farm on a daily basis, produce the newsletter, pay our enormous stack of bills, and keep our animals happy and healthy on a daily basis!

<p style="text-align: center;">Dan Wolf Shearing Services dantheshearingman@gmail.com Ph 315-594-1213 / Cell 315-398-9325</p>	<p style="text-align: center;">Put Your Ad Here! We send our newsletter out quarterly to over 700 members all over the United States! Email us at crackerbpalace@netzero.net</p>	<p style="text-align: center;">VILLAGE AUCTION Co. 5428 Rt. 14 Sodus, NY 14551 Phone: 315-483-1900</p>
<p style="text-align: center;">LandMasters Outdoor Services, LLC Residential & Commercial Yard Maintenance Services Snow Plowing & Tent Rentals Tire Removal & Disposal (DEC Licensed) Tracy & Lynn Carlyle Trevor Davey 315-483-6343 315-290-2039</p>	<p style="text-align: center;">Lake Affects Web Design Web designing, photo editing for those holiday card photos, ads, brochures, business cards, flyers and other graphic needs. www.la-webs.com Pet Brief Pet Sitting and Dog Walking in the Sodus Point Area www.petbrief.com Marlene Ferguson</p>	<p style="text-align: center;">Brad Whittaker Horseshoeing 315-331-5210 </p>
<p>Captain Jack's Good Time Tavern 315-483-9570 <i>"Sodus Point's Favorite Waterfront Restaurant"</i> Hosts Tom & Brenda Frank Daily Specials - Giant Fish Fries Steak & Seafood Combos New Banquet Room Book Your Parties Now!</p> <div style="border: 1px solid black; padding: 2px; display: inline-block; margin-top: 5px;"> <p style="font-size: small;">Greig Street Sodus Point</p> </div>	 <p style="font-size: small;">"Filling the Need For Genuine Feed" 1825 Storms Rd., Lyons 315-946-6061</p>	<p style="text-align: center;">TRUCK'S OVEN Pizza & Subs Worth Fetching!</p> <p style="font-size: small; text-align: center;">8487 Greig St, Sodus Point 585-967-4889 Thank EWE Trucks for every \$\$ you put in their CBP donation bucket, they take \$1 off your order! Winner of Popular Vote 1st Place Award in "Best Pizza in Wayne County" Contest</p>
<p style="text-align: center;">Trachtenberg Veterinary Associates Equine Veterinary Care David Trachtenberg, DVM Thais McCoy, DVM Amy Ortez, DVM STE 3B 481 Penbrooke Drive Penfield, NY 14526 Current Ph: 315-524-4879 New phone number coming soon!</p>	<p>SHAVINGS & SAWDUST DELIVERED E.A. EATON TRUCKING Edward Eaton 315-946-4583 905 Leach Rd., Lyons</p>	<p style="text-align: center;">PATON'S MARKET PLACE Locally owned and operated 109 W. Main Street, Sodus 315-483-4127 <i>Thank you for your daily donation of fruit, vegetables and treats for the critters and your donations in support of our events!</i></p>
<p style="text-align: center;">Abe's Waterfront BOAT HOUSE <i>Bar & Grill</i> Banquets-Parties-Entertainment-Fundraisers Sodus Bay's Largest Out Side Deck & Upper Deck! See our NEW MENU on our website www.abeswaterfront.com 8527 Greig St, Sodus Point 315-483-4444/585-259-2993</p>	<p style="text-align: center;">SIMPSON LAWN CARE GLEN SIMPSON, JR 315-879-7332 Please leave a message if no answer Lawn Mowing-Hedge Trimming Small Tree Removal Spring & Fall Cleanup Scrap Metal Removal</p>	<p style="text-align: center;">JULIANO'S AUTO PARTS Wayne County's Oldest & Largest Auto Parts Dealer Est 1950 Late Model Used Parts - Foreign & Domestic 25 ACRES OF USED PARTS National Teletype Service 4735 Rt. 14, Sodus 315-483-4607 DMV #7002942 <i>Closed Sat & Sun Open Mon - Fri 8a - 5p</i></p>

Cracker Box Palace – Large Animal Shelter at Alasa Farms
A not for profit organization helping animals in need
PO Box 174 6450 Shaker Rd., Alton, NY 14413
www.crackerboxpalace.org

Non Profit Organization
US Postage Paid
Mailed From Wolcott, NY 14590
Permit No. 8

Visit the Farm!

Winter Hours – Saturdays 10am till 3pm
Or pick up a self guide tour map at the barns and visit
when you wish!

Check our web site for tour itineraries for Group
Tours, Events and Seminars going on at the farm!

For adoptions, admissions or guided tours email for an appointment at
crackerbpalace@netzero.net or call 315-483-2493. Please leave a message.
We'll get back to you as soon as we can! We're usually out in the barns.

If you have an animal emergency, call 911 or your Veterinarian!

Become a volunteer! Orientations are the 2nd Saturday of every month!

Newsletter published quarterly by Cracker Box Palace, est. 2000.
NYS Tax ID#223956 EIN 16-1600471 NYS Charities Reg 40-91-90

Mail to our Valued Member at:



Newsletter

Volume 12 – Issue 1 March 2012

Upcoming Events – Check Our Web Site For Details!

March 3 2012	7 th Annual Gala Snowflake Ball! Email for details crackerbpalace@netzero.net
March 4 – 11, 2012	Animal Book Collection!
March 31, 2012	Muddy Trail Hike!
April 21, 2012	First meeting of the Trail Riding Club! And the Re-Opening of the Museum!
April 28, 2012	Farm Clean Up Day and Volunteer Appreciation Picnic
May 5 2012	Open House at the farm and Derby Party!
May 19 th & 20 th (weekend)	Large Animal Response Training with Days End Horse Rescue of Maryland!
May 26, 2012	Trail Work Party with Genesee Land Trust and The Emergency Survival Shelter Building Camp Out
TBA in May	The dedication of “Beryl’s Bunny Emporium” at the Cow Barn

And much much more planned for 2012!!!! Details in this newsletter!

Would you like to join us in planning events, chairing a committee, join the board, running The Apple Booth,
Community Booth or Gift Shop, be a tour guide? There's plenty of jobs volunteering here at the farm?
Let us know! We're looking forward to an exciting 2012!

